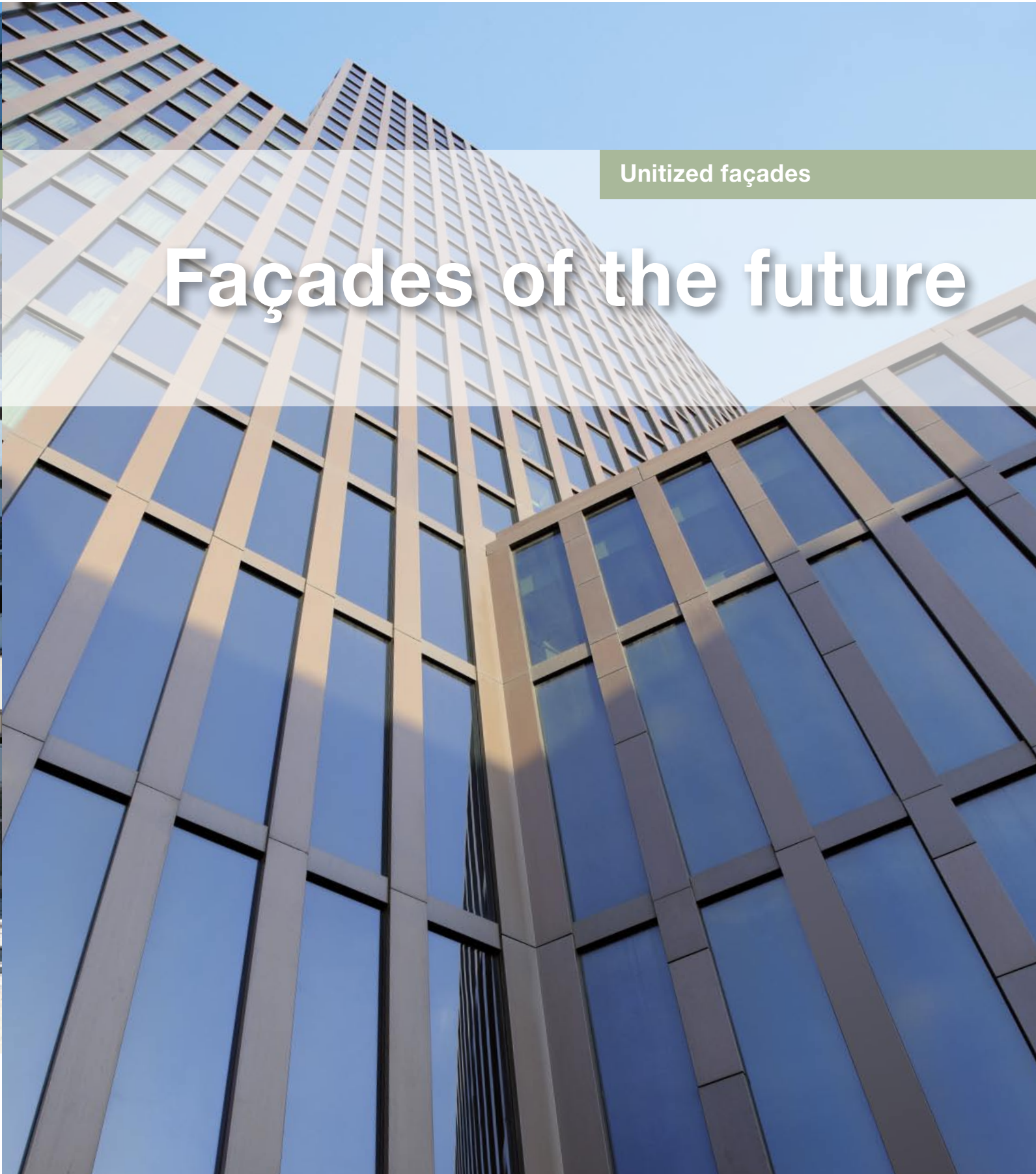


**WICONA®**

TECHNOLOGY FOR IDEAS

Unitized façades

# Façades of the future





Duravit, Hornberg



Breitner Center, Amsterdam

## WICTEC unitized façades

### Efficiency from planning to completion

**Do you often find yourself under pressure to meet deadlines during planning and execution?**

With our unitized façades we provide you with:

- Planning security
- Straightforward installation process
- Slim visual appearance
- Wide range of construction options
- Building-specific special solutions
- High quality standard
- Simple construction through use of WICONA Unisys
- Integration of building technology
- Sealant-free installation

### For highest requirements in quality and heat insulation

**The WICTEC unitized façades are characterised by excellent insulating properties of up to  $U_{cW} < 1.0 \text{ W}/(\text{m}^2\text{K})$ .**

The high quality of the planning security, manufacture and installation guarantees you, as a planner and architect, perfect conditions for optimal construction. The structural and creative requirements for your façade can be met with a wide range of construction options. Sound protection requirements up to 47 dB can be met.

**The major differences and advantages of WICTEC unitized façades compared to a stick construction:**

- Delivery and installation of prefabricated units
- Short installation times for renovation projects and new builds
- Installation without scaffolding possible
- Each unit is prefabricated in the factory – guaranteeing a high level of process safety and quality



Hotel Mercure, Dresden, Renovation of façades WICTEC EL

### Ideal for new builds and renovation projects

**WICTEC unitized façades are always the right choice!**

Using WICTEC unitized façades, the upgrade of energy efficiency of hotels, administrative buildings, universities and other projects can be implemented even during their operation (continuous use). Installation is carried out without scaffolding and more quickly than with any other façade construction.

## The following ranges are available for your planning:

### WICTEC® EL

#### WICTEC EL unitized façades

##### Profile technology:

- Composite aluminium profiles from quality assured and monitored production
- Slender sight lines of 60, 70 and 90 mm
- Profile depth: 201 mm
- Delicate outer appearance thanks to slim covering profile with butt joints

##### Glazing:

- Slim continuous glass gaskets

##### Infill thicknesses:

- Up to 41 mm

##### Thermal insulation:

- Complies with latest German thermal insulation regulations

### WICTEC® EL60

#### WICTEC EL60 Unitized façades

##### Profile technology:

- High-insulated composite aluminium profiles from quality assured and monitored production
- Slender sight line of 60 mm
- Profile depth: 198 mm
- Outer appearance with picture frame effect

##### Glazing:

- Slim continuous glass gaskets

##### Infill thicknesses:

- Up to 36 mm

##### Thermal insulation:

- Efficient thermal insulation performance with  $U_i$  values up to  $1,6 \text{ W}/(\text{m}^2\text{K})$

### WICTEC® 50EL

#### WICTEC 50EL Unitized façades

##### Profile technology:

- Aluminium profiles using stick technology, with high efficiency insulation insert
- Slender sight lines of 50 and 65 mm
- Profile depths from 195 to 213 mm
- Attractive outer appearance with picture frame effect

##### Glazing:

- Glass gaskets with lips, providing high level of insulation

##### Infill thicknesses:

- Up to 45 mm

##### Thermal insulation:

- Excellent thermal insulation performance with  $U_i$  values up to  $1,4 \text{ W}/(\text{m}^2\text{K})$

# WICONA®

TECHNOLOGY FOR IDEAS

Unitized façades

**Hydro Building Systems GmbH**  
Söflinger Straße 70  
89077 Ulm/Donau, Germany  
Phone +49 (0) 7 31 39 84-0  
Telefax +49 (0) 7 31 39 84-2 41  
[www.wicona.com](http://www.wicona.com)

**Title page: Hotel Empire Riverside, Hamburg**  
**Back cover: Spree Palais am Dom, Berlin**

2488/01008910

WICONA is a Hydro brand

